



## INTACT TYPE 95

### F

#### 1. GENERAL

Main features of INTACT partitions are :

- **An internal structure** consisting in strong galvanized steel profiles. Facing panels are kept to the structure by flush mouldings in aluminium.
- **The visible profiles** are proposed in aluminium in order to enhance aesthetics of partition. Aluminium is proposed with anodized or epoxy-coated finish (RAL range).
- The system may accept a wide range of **facing panels** : gypsumboard, chipboard or any specified material. The material is enhanced by a wide variety of coverings : vinyl, laminated , high pressure laminated. It allows to match any aesthetical requirement. Thickness of boards will be between 12mm and 14mm as a standard.
- Simple or double **glazing** may be installed by means of aluminium profile designed to have

flush glass modules with glass thickness comprised between 4 and 8mm. Tight sealing guarantees dustfree area between glasses. System can incorporate venetian blinds.

- **Door modules** include aluminium door frames carefully prepared by the manufacturer's workshop. Door frames allows door blade thickness from 8 till 50mm.
- **Serviceability guarantee**  
Manufacturer guarantees supply of compatible components of the system for a duration of at least 10 years.

#### 2. Description of Components

**2.1. Posts** are made out galvanized steel sheets of minimum 10/10 mm thickness and are S-shaped by roll-forming process. It is equipped with conduit cutouts for wiring and piping and regular clip slot for clipping flush mouldings .

**2.2. Ceiling tracks.** Aluminium profiles for ceiling tracks are designed with double wings in order to receive vertical studs in the middle and panels at both ends. It is also equipped with an adhesive acoustic sealing of 50x3mm size. Two profiled grooves allow to slide in it fishplates in order to ensure proper alignment.

#### **2.3. Floor Track.**

Aluminium track combines recessed skirting . Studs fits in the lower section and panels are laid down in the upper section. Profiled grooves allow to slide in it fishplates in order to ensure proper alignment.

#### **2.4. Joining panels.**

Flush Omega shaped aluminium profiles are equipped with clip slots at same step as the clip slots of studs. It keeps tightly the panel against the structure by means of clips which maintains a constant pressure on the full height of the panel. PVC inserts (10 different colors) are pushed into the omega to finish.

#### **2.5. Glazed modules.**

Glazed modules are achieved by means of aluminium profiles equipped with two grooves where rubber seal are inserted. Seal size is adapted to the glass thickness used in order to ensure proper tightness keeping total thickness of partition constant. In single glass application a pvc filling profile is used on the non-glazed side. Option of prefabricated glass modules exists for modules below 2 sq.m.

#### **2.6. Door frame.**

Door frames are made out specially designed aluminium profiles to suit the system. Door frame is custom-made and prepared by the manufacturer in order to install a minimum of two steel hinges and a locker. Hinge fixation screws are not visible when door is

open. Glass door fits also the system.

### **3. Facing panels .**

Boards of various nature and finishes will suit the system. Thickness will be 12 to 14mm. Standard are plasterboard covered with vinyl or laminated chipboard.

### **4. Door leaves.**

Three options exist:

4.1 **Solid core** chipboard door leave of various dimensions, covered with high pressure laminated sheet or prepainted. This can be incorporated with a glass section or vision panel.

4.2 **Aluminium framed** door with single or double glazing or solid core.

4.3 Tempered single **glass** door

**Lockers** are of reversible type and front of locker will be made out stainless steel. Cylindre, supplied with 3 keys, will match the European standard.

Handle will be stainless steel U- or L-shaped.

### **5. Noise attenuation**

Internally, the INTACT partition receives a 60mm layer of rockwool with a density of minimum 35kg/cu.m.

Test have determined noise attenuation between 40dB and 44dB.

### **6. Aluminium profile finish**

At election :

- Anodized aluminium 5 to 10 microns class E.W.A.A.
- Epoxy-coated in oven with RAL or NCS epoxy/polyester powder. Layer will be at minimum 60 microns thick.

### **7. Technical performances agreements.**

System has received official approval for :

- 1) Demountability
- 2) Interchangeability of modules
- 3) acoustic performance
- 4) Stability (test consisting in a 50kgs sandbag swinging 90° from horizontal position on the partition)

All test agreements are available upon request.

### **MAIN DIMENSIONS**

#### *Finished Product*

Width: economical value for module : 1200-1215-1265mm.

Thickness : from board to board 95 mm ; widest profile : 104mm .

Height : economic value 2600mm & 3000mm ; up to 3650mm

*Glass thickness* 4 to 8 mm as a standard

*Board thickness* : 12 ~14 mm as a standard

#### *Door leaves thickness*

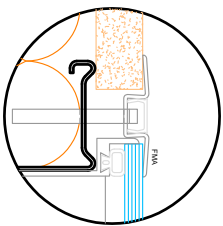
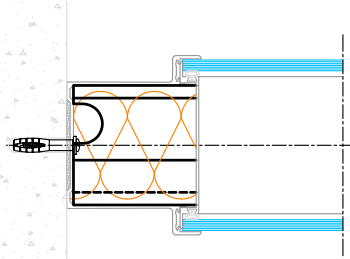
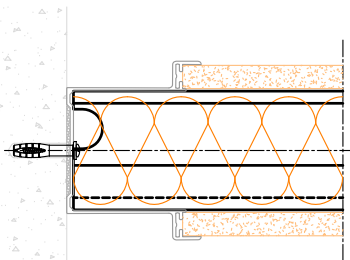
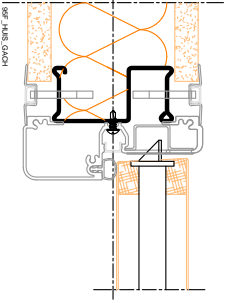
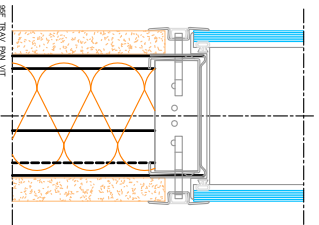
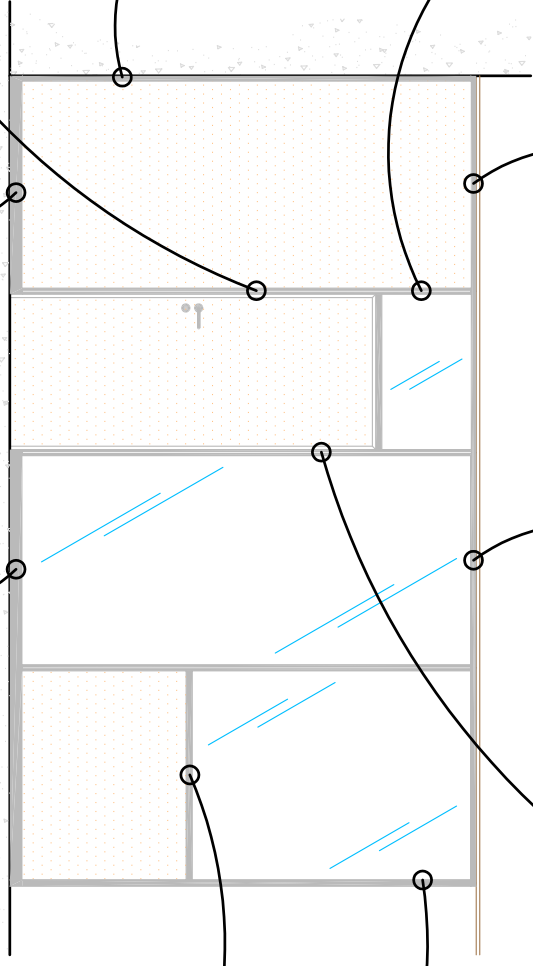
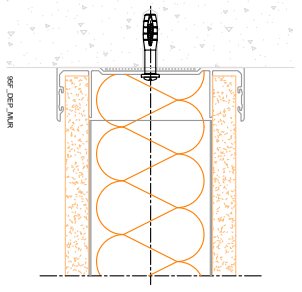
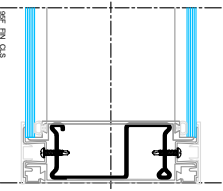
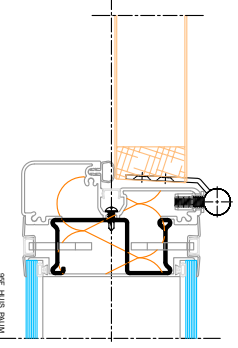
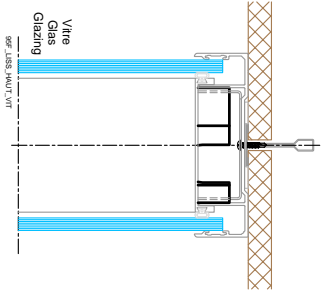
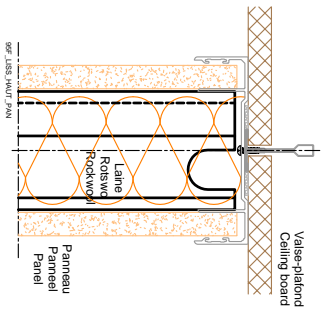
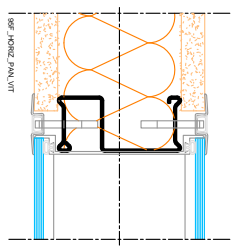
8 ~10 mm (tempered glass)  
38~50mm (solid core wood)  
50 mm (aluminium framed)

#### *Internal insulation* :

60mm, 35kgs/m<sup>3</sup>

#### *Acoustic performance* :

40 à 44 dBa



INTACT 95 Type "F"



