



INTACT TYPE 95 BF

1. GENERAL

Main features of INTACT partitions are :

- **An internal structure** consisting in strong galvanized steel profiles. Facing panels with pencil line joint, are kept to the structure by specially designed invisible clips called “judclip”
- **The visible profiles** are proposed in aluminium in order to enhance aesthetics of partition. Aluminium is proposed with anodized or epoxy-coated finish (RAL range).
- The system may accept a wide range of **facing panels** : gypsumboard, chipboard or any specified material. The material is enhanced by a wide variety of coverings : vinyl, laminated, high pressure laminated. It allows to match any aesthetical requirement. Thickness of boards will be between 12mm and 14mm as a standard.
- Simple or double **glazing** may be installed by means of aluminium

profile designed to have flush glass modules with glass thickness comprised between 4 and 8mm. Tight sealing guarantees dustfree area between glasses. System can incorporate venetian blinds.

- **Door modules** include aluminium door frames carefully prepared by the manufacturer’s workshop. Door frames allows door blade thickness from 8 till 50mm.
- **Serviceability guarantee**
Manufacturer guarantees supply of compatible components of the system for a duration of at least 10 years.

2. Description of Components

2.1. Posts are made out galvanized steel sheets of minimum 10/10 mm thickness and are S-shaped by roll-forming process. It is equipped with conduit cutouts for wiring and piping and regular clip slot for clipping flush moulding profiles used to joint door frames or glazed modules.

2.2. Ceiling tracks. Aluminium profiles for ceiling tracks are designed with double wings in order to receive vertical studs in the middle and panels at both ends. It is also equipped with an adhesive acoustic sealing of 50x3mm size. Two profiled grooves allow to slide in it fishplates in order to ensure proper alignment.

2.3. Floor Track.

Aluminium track includes recessed skirting . Studs fits in the lower section and panels are laid down in the upper section. Profiled grooves allow to slide in it fishplates in order to ensure proper alignment.

2.4. Joining panels.

Facing panels with pencil line joint, are kept to the structure by specially designed invisible clips called “judclip”. Those clips are hammered in the pre-covered edge of the panels.

2.5. Glazed modules.

Glazed modules are achieved by means of aluminium profiles equipped with two grooves where rubber seal are inserted. Seal size is adapted to the glass thickness used in order to ensure proper tightness keeping total thickness of partition constant. In single glass application a pvc filling profile is used on the non-glazed side. Option of prefabricated glass modules exists for modules below 2 sq.m.

2.6. Door frame.

Door frames are made out specially designed aluminium profiles to suit the system. Door frame is custom-made and prepared by the manufacturer in order to install a minimum of two steel hinges and a locker. Hinge fixation screws are not visible when door is open. Glass door fits also the system.

3. Facing panels.

Facing panels of various natures and finishes will suit the system. Thickness will be 12 to 14mm. Standards are plasterboard covered with vinyl or laminated chipboard. Board vertical edges are covered in factory with vinyl or pvc .

4. Door leaves.

Three options exist:

4.1 **Solid core** chipboard door leave of various dimensions, covered with high pressure laminated sheet or prepainted. This can be incorporated with a glass section or vision panel.

4.2 **Aluminium framed** door with single or double glazing or solid core.

4.3 Tempered single **glass** door

Lockers are of reversible type and front of locker will be made out stainless steel. Cylindre, supplied with 3 keys, will match the European standard. Handle will be stainless steel U- or L-shaped.

5. Noise attenuation

Internally, the INTACT partition receives a 60mm layer of rockwool with a density of minimum 35kg/cu.m.

6. Aluminium profile finish

At election :

- Anodized aluminium 5 to 10 microns class E.W.A.A.
- Epoxy-coated in oven with RAL or NCS epoxy/polyester powder. Layer will be at minimum 60 microns thick.

MAIN DIMENSIONS

Finished Product

Width: economical value for module : 1200 mm

Thickness : from board to board 95 mm ; widest profile : 104mm .

Height : economic value 2600mm & 3000mm ; up to 3650mm

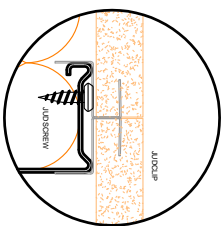
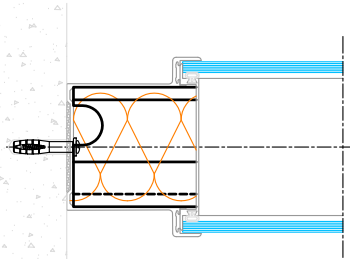
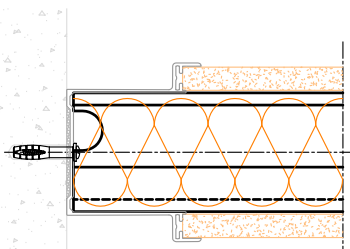
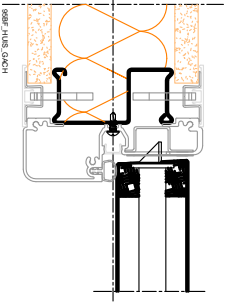
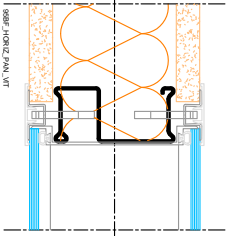
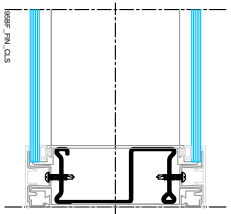
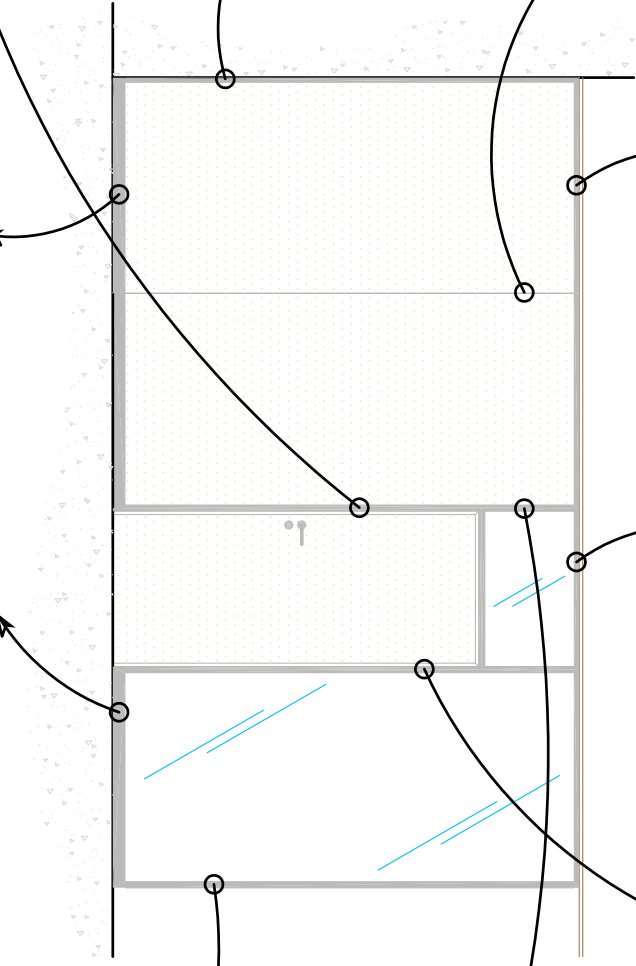
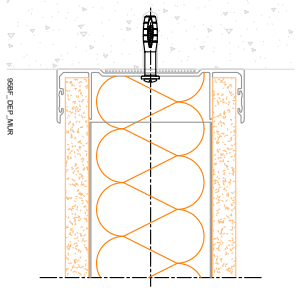
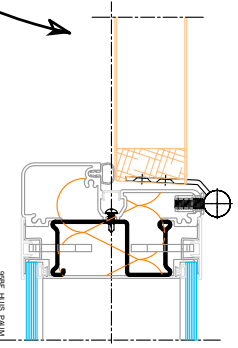
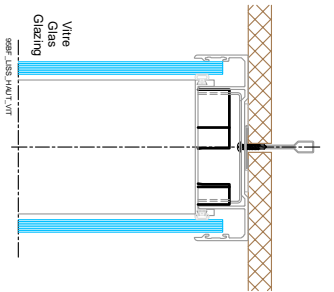
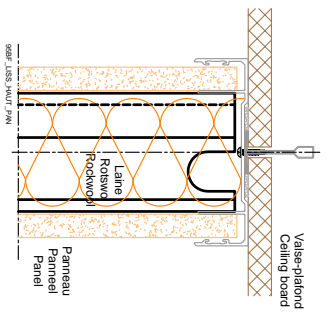
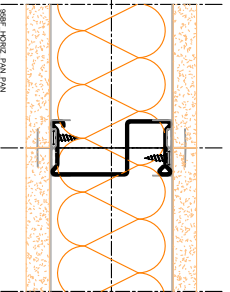
Glass thickness 4 to 8 mm as a standard

Board thickness : 12 ~14 mm as a standard

Door leaves thickness

8 ~10 mm (tempered glass)
38~50mm (solid core wood)
50 mm (aluminium framed)

Internal insulation : 60mm, 35kgs/m³



INTACT 95 Type "BF"



